



INDIVIDUAL LEARNING SPACES



HOW DOES A2S PROVIDE SOLUTIONS?

WHEN EQUIPPING AN EDUCATIONAL INSTITUTION, WE FIRST
LOOK AT **THE PEDAGOGICAL CONCEPT** BEHIND IT.
FROM THERE, WE HONE IN ON AND REFINE THE BEST APPROACH.
WE EXAMINE **THE FORMS OF LEARNING** WITHIN THE
SCHOOL AND PROVIDE DIRECTION FOR THE STRUCTURE
OF THE SPATIAL LEARNING ENVIRONMENT.

THE LEARNING LOCATION

ONCE WE KNOW AND UNDERSTAND THESE CONDITIONS
WE CREATE **ROOM CONCEPTS** WITH OUR CLIENTS.
THIS PROCEDURE HELPS US FIND THE BEST SOLUTIONS.
FINALLY, WE COMPLETE THE VISION OF THE
STRATEGY, PROVIDING OUTSTANDING
PRODUCT SOLUTIONS.



"No method is more constructive for stimulating the development of people and influencing their behaviour than shaping the environment in which they live and learn. This environment is not only defined by the room but also by design, light, colors, smells, and sounds. However, the designed environment is primarily defined by the people who create the social climate and culture of life together.
Children need rooms to help them regulate their excitement and relaxation. A sensibly designed environment is therefore relaxed and stimulating at the same time and provides both activating and calming stimuli. It welcomes the guest as a whole human being. There is time, space, and material for curiosity, the need for interaction and community, for expression and design, as well as for structure and guidance in order to pursue personal and/or joint goals."

(sbw House of Learning)

"THE OTHER CHILDREN ARE THE FIRST PEDAGOGUE.
TEACHERS ARE THE SECOND PEDAGOGUE.
THE ROOM IS THE THIRD PEDAGOGUE."

(Loris Malaguzzi)

WE LEARN WITH MORE THAN OUR BRAINS.

For 80 years, A2S has been helping schools, pedagogues, and especially children learn. Over the years, traditional school furniture has changed and adopted integrated interior design concepts. The valuable know-how acquired over the years is reflected in our well thought-out, flexible design ideas which have one main goal: to provide students and teachers the necessary free space and inspiration for learning. The requirements of all-day class work, inclusion, and integration are also covered.

This brochure is supposed to provide ideas for the design and furnishing of rooms for various learning concepts. We would be happy if we were able to inspire you and then learn even more from and with you.

Yours,

Silke Stegner

Director of Marketing and Sales

6



LEARNING ROOMS

22



SELF-LEARNING CENTER

CAFETERIA



34



TEACHER'S WORK AREAS

40



52



PRODUCTS AND MATERIALS



CONTENTS

LEARNING ROOMS

- Introduction 6
- Multi-function room didacta 2017 8
- Multi-function room,
Secondary school 10
- Multi-age-group learning,
Secondary school 14
- Multi-age-group learning,
Elementary school 16
- Cluster, comprehensive school 18
- Interview with Gerald Hüther 21

SELF-LEARNING CENTER

- Introduction 22
- Self-learning center didacta 2017 24
- Atrium, vocational school 26
- Learning landscape, secondary school ... 28
- Remodeling, secondary school 30
- Hallway/group rooms,
secondary school 32

CAFETERIA

- Introduction 34
- Cafeteria, secondary school 36
- Cafeteria & assembly hall,
vocational college 38

TEACHER'S WORK AREAS

- Introduction 40
- Teacher's lounge didacta 2017 42
- Teacher's lounge with meeting room,
vocational college 44
- Teacher's large lounge,
secondary school 46
- Teacher's lounge/team rooms,
secondary school 48
- Triple teacher's lounge,
secondary school 50

PRODUCTS AND MATERIALS

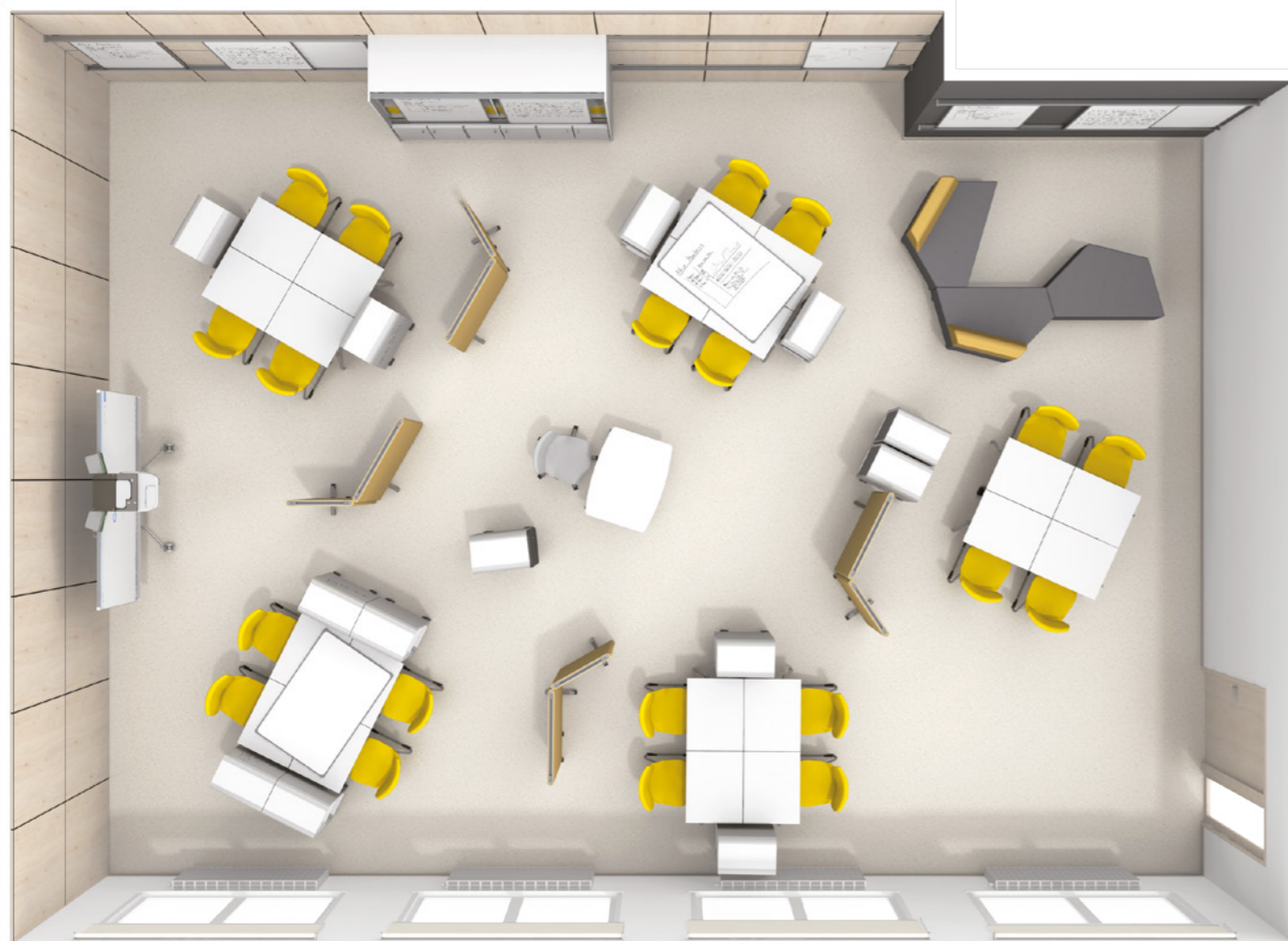
- Introduction 52
- Product overview 54
- Quality and development 58
- Materials and technologies 60

LEARNING ROOMS

Learning is an individual process that works best when students have the ability to coauthor their own learning progress independently. Individual learning formats are becoming more popular. And they create ever-changing challenges for pedagogues and learning rooms alike: pedagogues are supposed to make it possible for every student to work in peace in their own way without losing sight of the overall picture; learning rooms should generally have both multi-functional equipment and specialized areas.

When designing learning rooms, A2S focuses especially on zoning and acoustics. This is to ensure that classical lecture format, group work, partner work, but also silent work, retreat, and relaxation are all possible in the same environment.





Group work

MULTI-FUNCTION ROOM YOU DON'T NEED A LOT OF SPACE, JUST GOOD IDEAS.

This room concept permits a variety of educational approaches: classic lecture format, collaboration, group and individual work. One could also create secluded retreat and relaxation areas. The flexible furniture has multiple uses for self-directed and competence-oriented learning.

Acoustic barriers create a disturbance-free work atmosphere, especially for intensive individual work. The limited height allows you to keep an eye on everything even when you are on the other side of the barrier.

The student caddies, either individual or partner caddies, give each student a place to store his/her personal learning materials within the classroom. If needed, combining individual student and teacher caddies into a practical, expandable material cart is quick and easy. In order to underline the idea of mobility and ensure flexibility for all constellations, all walls were given robust, flexible wall board systems. The surfaces are either whiteboard or chalkboard.



Individual work



Partner work

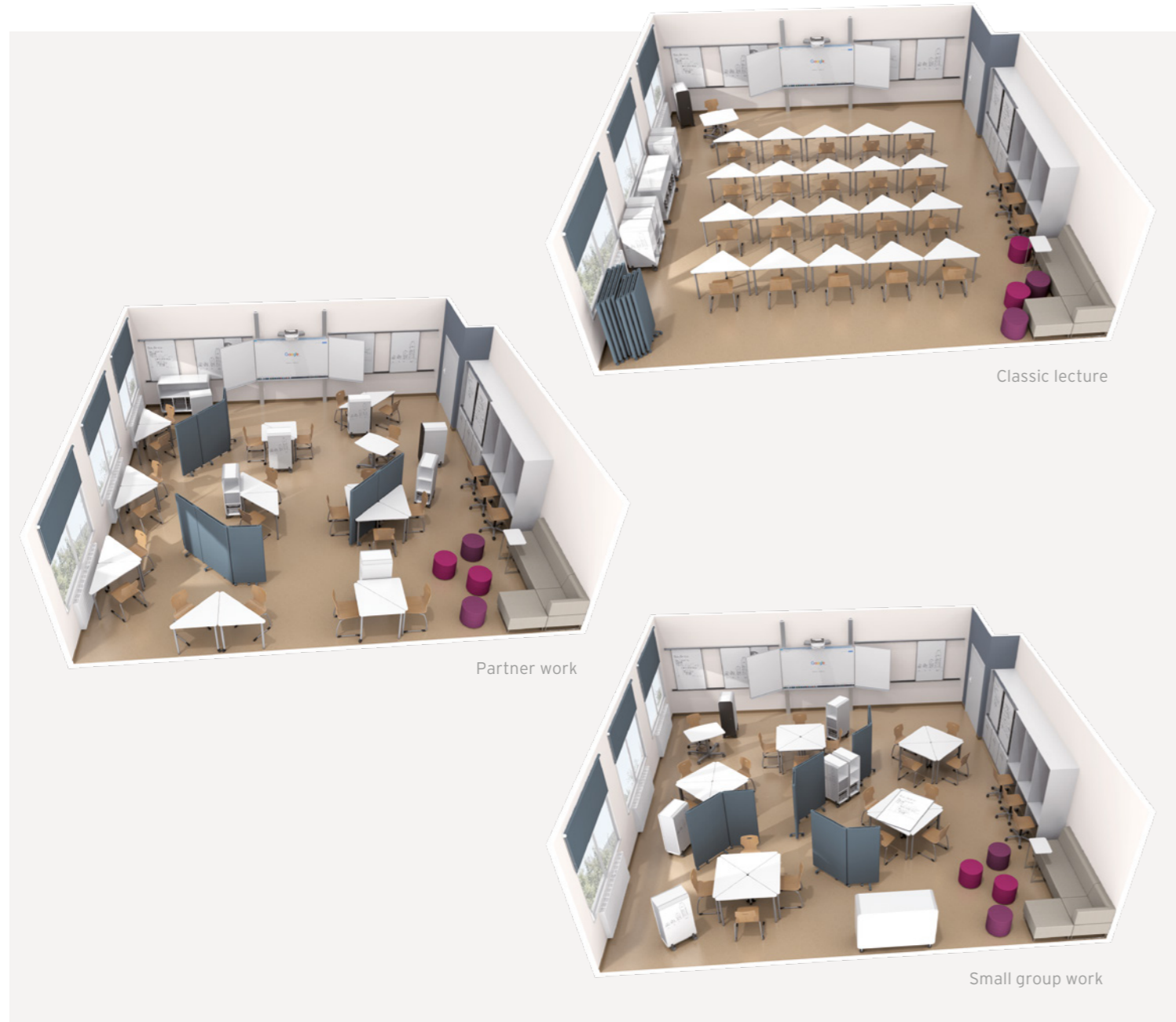


Classic lecture format



The textile-covered, movable acoustic barriers permit the free, discrete zoning of the room. Their height allows you to keep an eye on everything at all times. The personal caddies for students and teachers follow you to every work station and can be linked into entire shelf units if needed.





Classic lecture

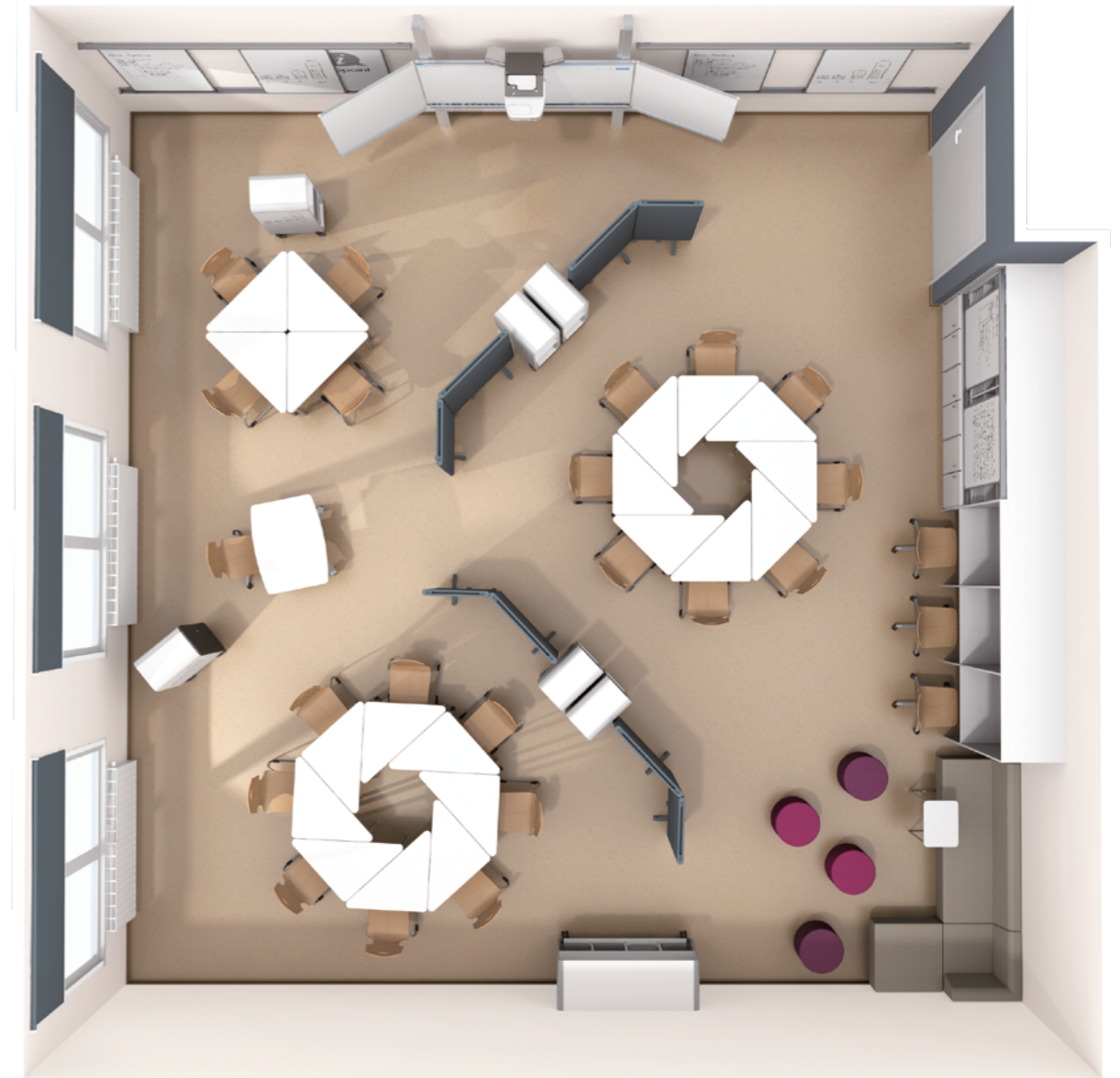
Partner work

Small group work

MULTIFUNCTION ROOM WITH TRIANGULAR TABLES FLEXIBLE FURNITURE ALSO CREATES A FLEXIBLE MIND.

Whether in the classic lecture format, group layout or partner work, our triangular tables adapt to every instructional style. Our tables can be rearranged quickly and easily into many possible configurations, for group work from 2 to 8 students. In addition to our flexible triangular tables, protected IT work stations provide peace and quiet for online instruction and

research. The combination of caddies and acoustic barriers give teachers the freedom to divide the room into zones for differentiated work, without restricting their visibility and sight lines within the classroom. A retreat and relaxation area offers space for small breaks.

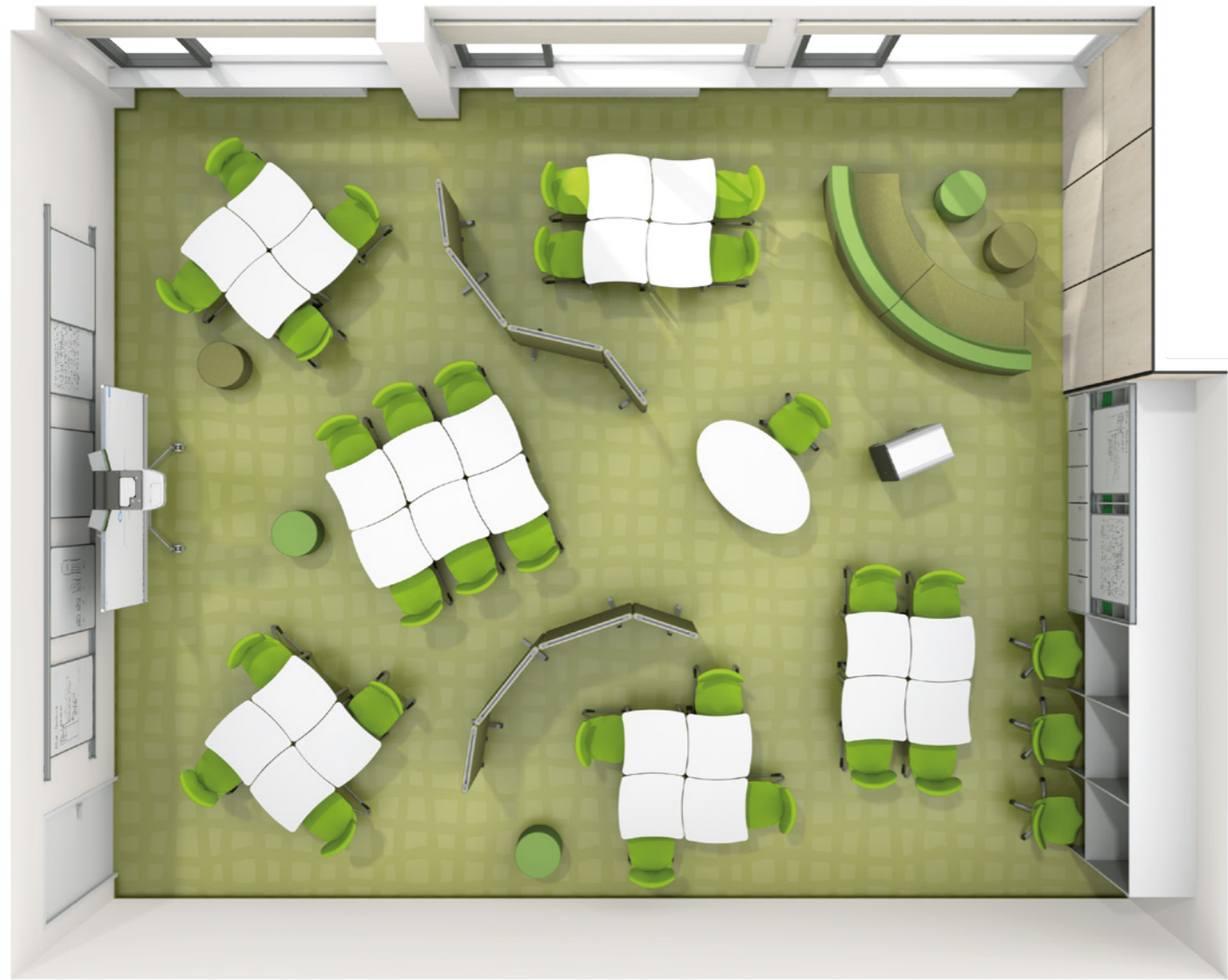


Group work



The triangular tables, easy to move and combine, are coupled with chairs with light Pagholz® seats and C-shaped frame. The double-sided caddies can be accessed by two students at the same time.





Group work



Classic lecture



Silent/partner work

MULTI-FUNCTION ROOM WITH WAVE-SHAPED TABLES
SMALL CHANGES MAKE ALL THE DIFFERENCE.

This installation variant of the previous learning room demonstrates how changing a few details, like adding organic wave edges to the tables, or altering the colors of the acoustic barriers and lounge furniture, can create a dramatically new atmosphere.

In addition to the flexible work places at the freely combinable wave-shaped tables, there are also fixed IT work stations. Using material caddies and acoustic barriers, it is easy to quickly divide the room into separate zones for differentiated work.

The height-adjustable, single column table with a visual barrier ensures the greatest possible mobility for pedagogues. The ergonomically shaped Flex-Z base provides students the perfect amount of mobility while seated.

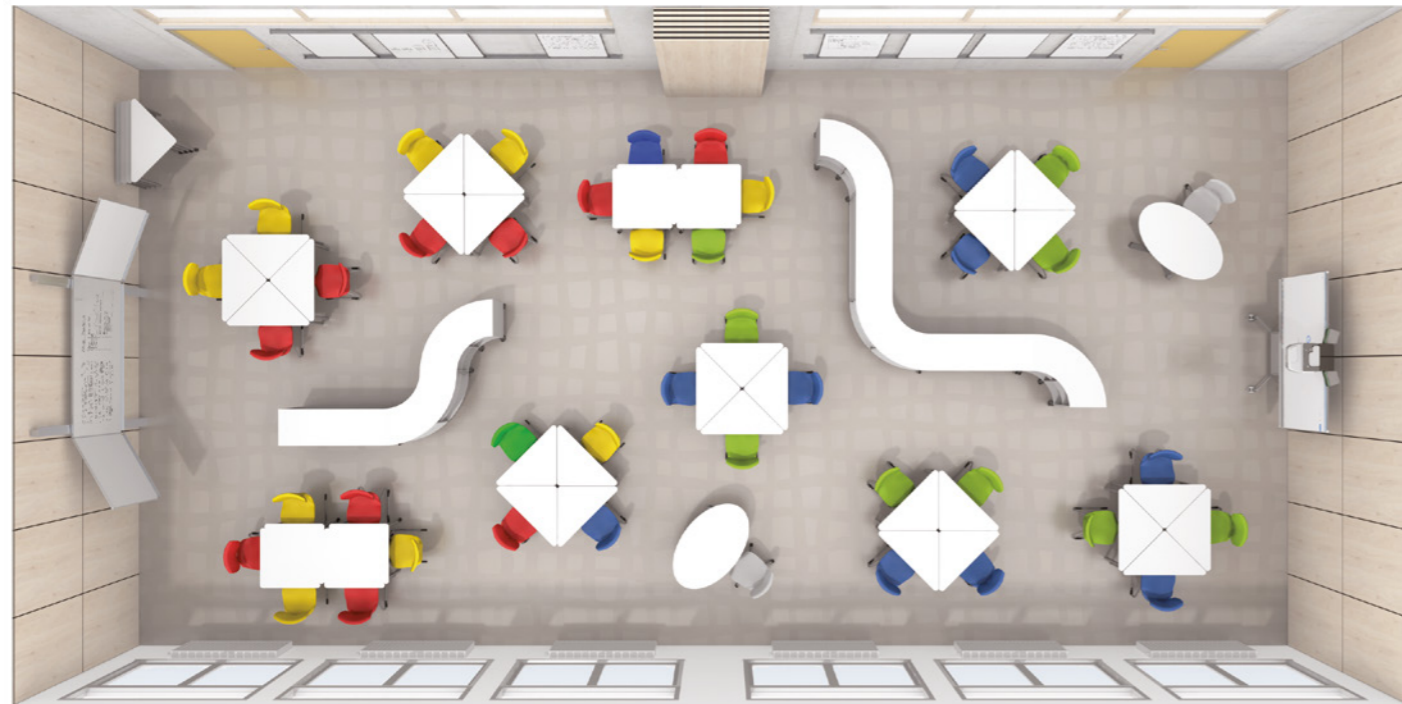


COLOR SCHEME

AGE GROUPS, ORDERED BY COLOR.

In this model of multi-age-group learning, different student groups are instructed by two pedagogues in one room based on proficiency levels. The color coding system helps both students and teachers to orient themselves.

Flexible shelves and acoustic barriers allow for the quick and quiet creation of different zones in the room, depending on group size and instruction method. The mobile teacher work places can be pushed into the needed position at any time. The pre-installed separation wall system can quickly divide instructional areas into two separate classrooms when needed.



Group instruction



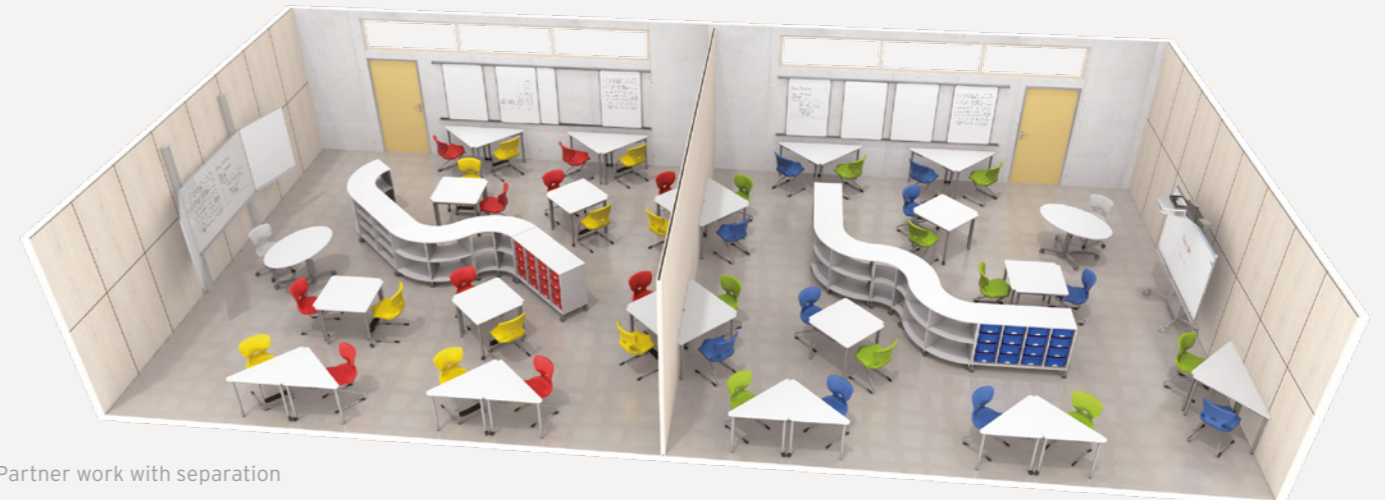
Flexible quarter circle shelves help structure the room. The attractive footrest stool with simple tool-free, single-handed operation, works great for students of all sizes.



Classic lecture format with separation



Group work



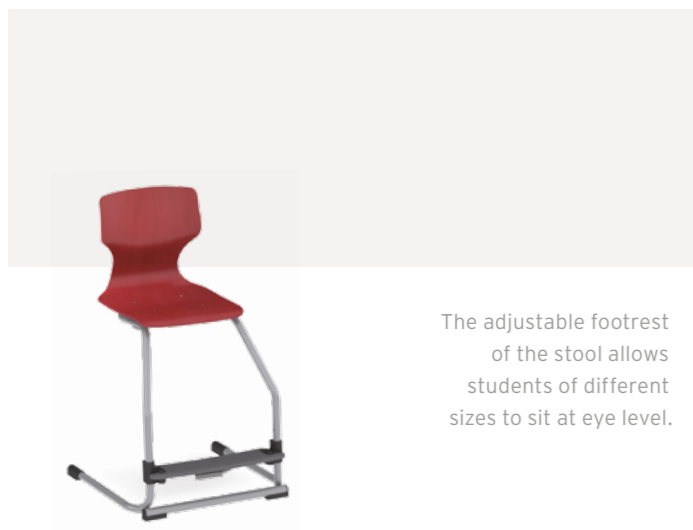
Partner work with separation



Circle seating



Partner work



The adjustable footrest of the stool allows students of different sizes to sit at eye level.



MULTI-AGE-GROUP LEARNING

ONE ROOM CONCEPT FOR ALL AGE GROUPS.

Current brain and developmental research confirms that the intellectual, psychological, and physical development of children do not run parallel. Even at as early as age 7, clear differences appear. Elementary schools thus not only combine children with different social backgrounds, nationalities, and religions but also with very unequal developmental speeds and other learning-related preconditions, children with and without disabilities. An elementary school that claims to be a "school for everyone" must therefore develop forms of learning and organization that view diversity as opportunity. Multi-age group learning (IYL) provides an excellent setting to do just that.

Using mobile furniture, the learning room shown here can be easily adjusted, to enable all needs and work forms. Chairs with easily adjustable footrests, allow students of different sizes to sit comfortably, ergonomically, and securely at a uniform height, which helps them keep a better overview of the room. The triangular tables can be configured in numerous arrangements and group constellations. The adjoining specialized room can be used for focused study of learning materials, or for undisturbed meetings, such as parent-teacher discussions.



Specialized room



Group instruction with specialized areas



THE CLUSTER MODEL

EVERYTHING AND EVERYONE UNDER ONE ROOF.

This building section houses several age groups in classrooms, as well as group and specialized areas. At the heart of these clusters are areas designed to serve both as learning spaces and lounge zones, within the center of each floor. Team rooms, sanitary supplies, and storage facilities are well integrated.

The flexible furnishings and the universally usable rail panel system mean that every individual classroom can achieve flexible instruction in the various social forms. The additional large specialized area allow students from different classes to work individually, at the same time.

A team room on every floor serves as a retreat for the pedagogues in order to work with focus or to recharge.



The modular media work stations are equipped with outlets and network plugs. The acoustic back walls can also be used as bulletin boards.





Lounge area



The cabinet system offers several different modules and surfaces, enabling unique design of hallway areas.



Wardrobe



LEARNING WITH FRIENDS.

Learning does not work without friends. A prerequisite to this is a philanthropic attitude that encourages friends to learn together.

HOW DOES LEARNING WORK?

The brain is not a muscle. We can practice and train it as much as we want because we learn by building relationships - with objects and people. Every time we discover something that is important for us, it "gets under our skin" and so-called emotional centers are activated in our brains. They lie in the center of the brain and are connected to all other areas.

WHAT EFFECTS DO FEELINGS HAVE ON LEARNING?

If the emotional centers are stimulated, chaos ensues in the areas that are responsible for regulating the body. This then expresses itself in feelings: The heart begins to race, we break into a sweat, it becomes hard to catch our breath, or we become weak in the knees. These are the somatic markers that occur when something "gets under our skin". And when we find a solution, this chaos becomes order again. This releases neuroplastic neurotransmitters which act like "fertilizer" and stabilize all the networks in the brain that contribute to the solution of the problem. For this reason, we can only learn something permanently when it is emotionally charged, i.e. is fun. Only when the emotional centers are stimulated - for instance when we manage to do something well or we have a "lightbulb moment" - are all the neurotransmitters released that result in plastic remodeling processes in the brain.

SO WHAT SHOULD BE DONE?

We should develop a culture of interaction with each other in which we do not put each other down or treat each other like objects but meet each other as subjects. We can do this by inviting, encouraging, and inspiring others to want to create another even better experience. There are people who not only manage to encourage other people but even inspire them because they enjoy igniting a spark in others. They reawaken the desire in others to open up again, to start something new, to open their eyes. And the wonderful thing about it is that somehow this always seems to work.

„ALL PEOPLE START THEIR LIVES AS DISCOVERERS AND DESIGNERS. THEY SHOULD NOT END UP AS OBJECTS IN THE EDUCATION AND TEACHING METHODS OF OTHERS.“

(Dr. Gerald Hüther,
Neurobiologist, Chairman of the Academy for Potential Development)

SELF-LEARNING CENTER

In addition to specialized and multi-function rooms, self-learning centers provide the ideal supplement for deeper self-directed study of the material. Here, students can retreat into a relaxed, homey atmosphere or work together in teams. Different zones for research, communication, or work are characteristic. Libraries and media centers are generally part of a self-learning center for secondary levels I and II. Communication and rest areas should be acoustically separated from each other, without losing the clear structure of the room. In this way, one or two teachers are enough to monitor the classroom. Due to the size of most self-learning centers, they can even be used for smaller events.



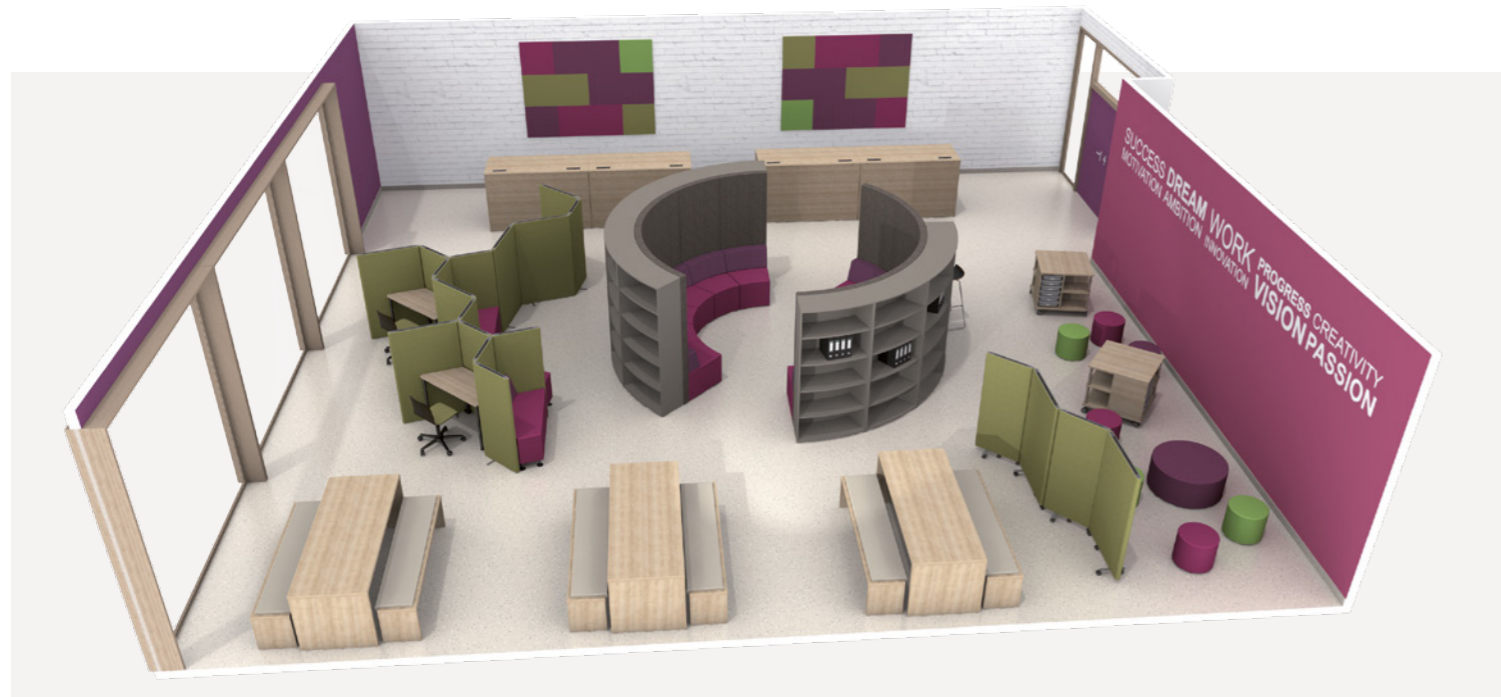
ROOM IN THE ROOM

RIGHT IN THE MIDDLE OF IT, AND YET UNDISTURBED.

The unique, eye-catching detail in this room is the large rotundalike structure. Its outer surface acts as a library, providing both shelf space and individual work places, while it's interior is acoustically shielded to offer students a protected retreat for reading and relaxing. Due to its size, the inside area can also be used for presentations and discussions of entire learning groups.

Grouped around the rotunda, are places for various work forms, from individual and group work to research. The individual work places have lower acoustic separators, which facilitate focused work free of interruptions.

Communication islands, with flexible sitting elements and mobile book carts, invite interactions for smaller or larger groups. With all layouts, there is a full view of the entire room, in addition to the enhanced organization and zoning.



ATRIUM

A HEALTHY LEARNING CLIMATE STARTS WITH THE RIGHT ENVIRONMENT.

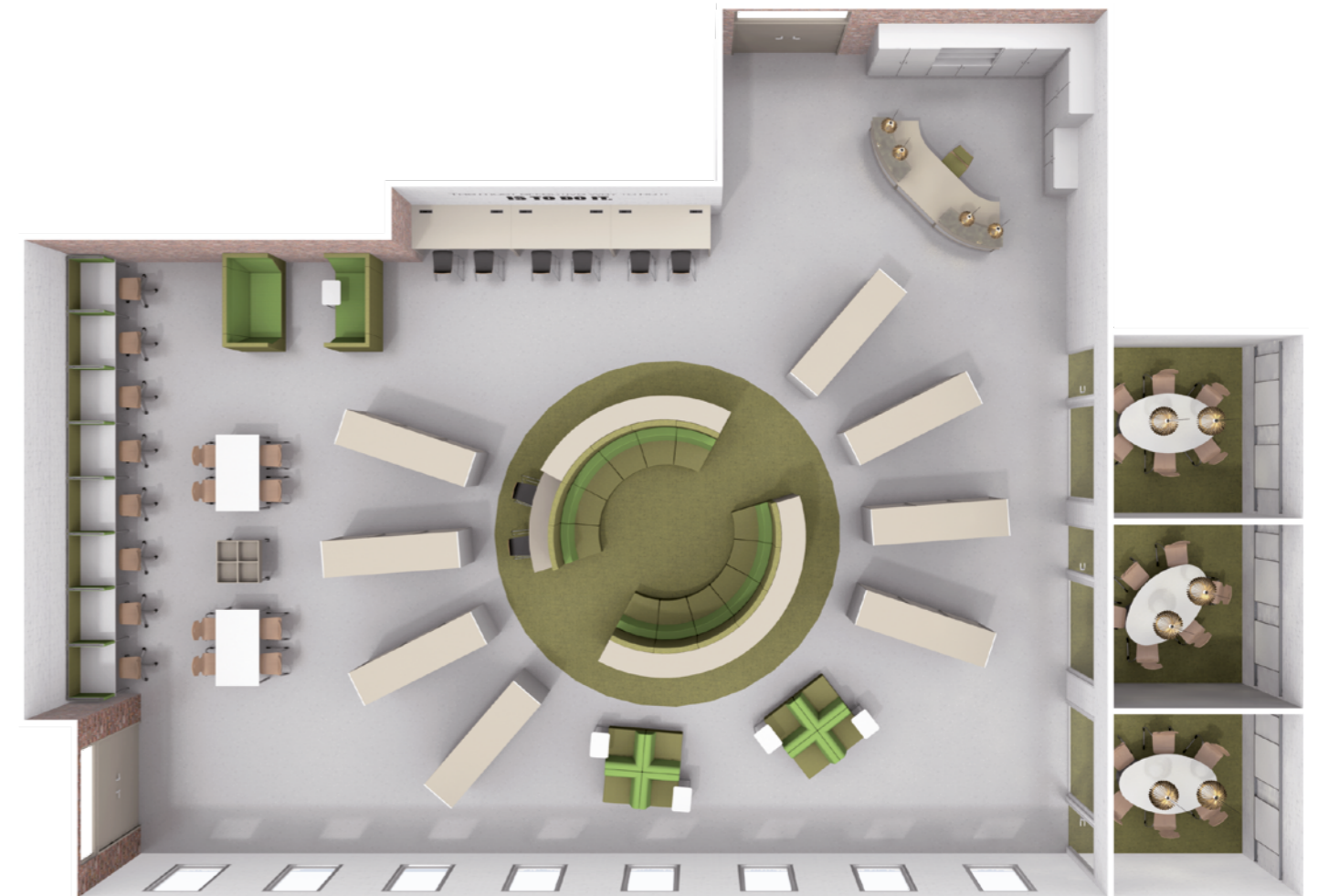
Many theories exist about how we acquire and absorb new knowledge successfully. Most all of these theories have one thing in common: people like to learn when they feel comfortable and safe. This self-learning center in the atrium can be used as a zone for meeting, communicating, learning, and relaxing.

Between the library and the smaller areas designed for large and small groups, there is a central zone, with comfortable sofas. The high, sound-absorbing backrests encourage students to relax, and also to interact with each other. They do not disrupt the surroundings, while enhancing this room's visual appeal.

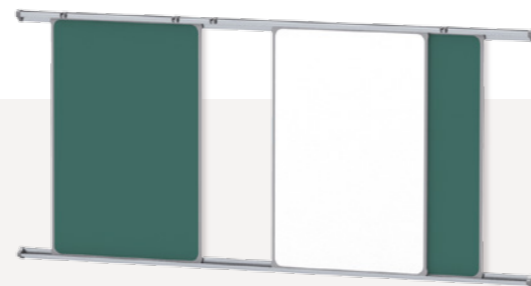


Bridge tables provide space for spontaneous large or small group meetings. Media work stations, with integrated electric and network outlets, permit uncomplicated fast online work.





The elements of the flexible wall board system can be shifted, turned, or taken out, and can also be used in a flat orientation for collaboration.



LEARNING LANDSCAPE A LEARNING UNIVERSE WITH A CALM CENTER.

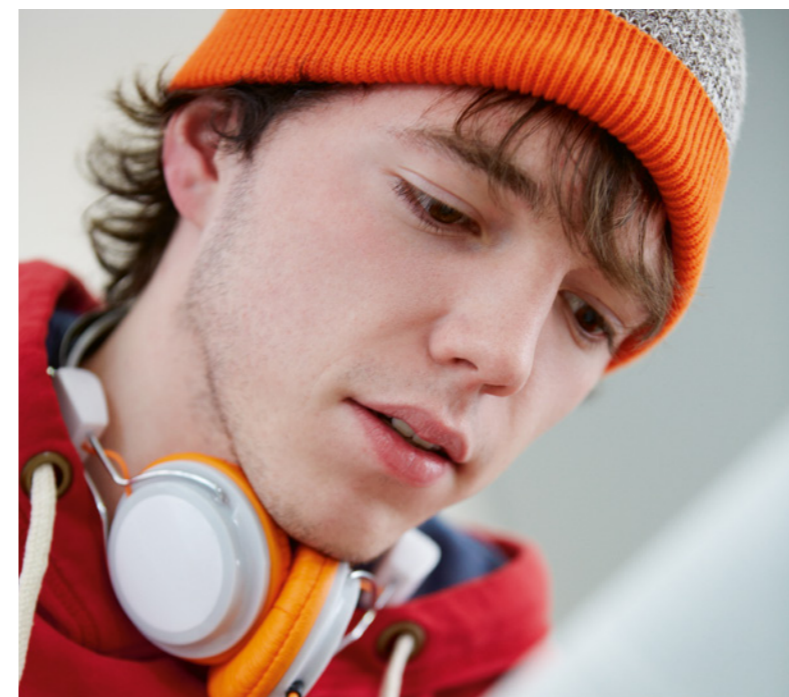
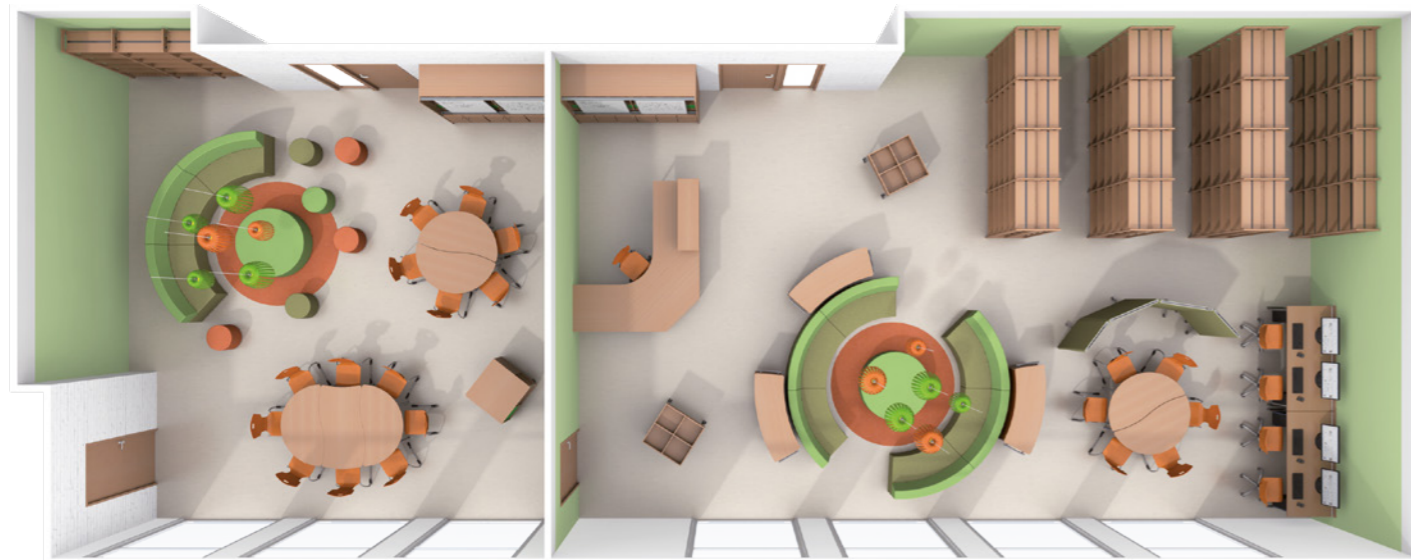
All around the rotunda-like, acoustically-shielded rest area, the library shelves are arranged in a star-shape. One can also find social areas surrounding the rotunda, with IT work stations, communication zones, retreat areas, and group work areas.

An interesting feature of this design - the three separate in-depth study rooms, that can be used for group efforts, specialized work, and for meetings with the pedagogues or parents.

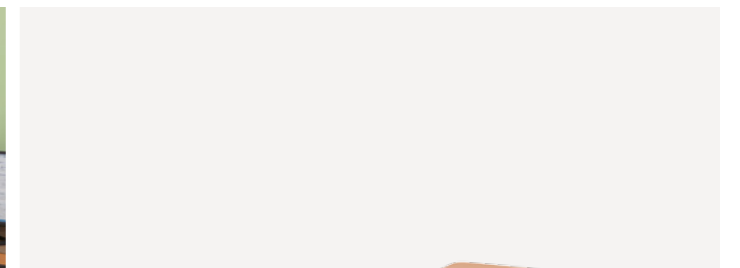
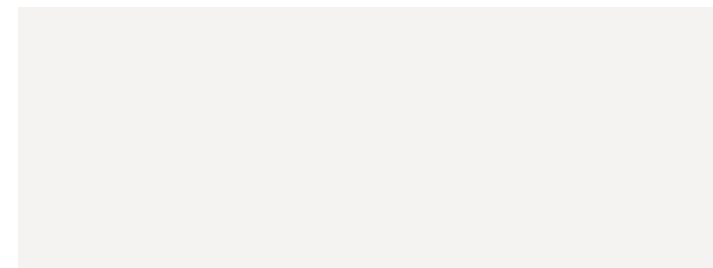
REMODELING

ONE SMALL STEP TO A SELF-LEARNING CENTER.

This former specialized classroom was converted into a self-learning center. The room, which is always used under supervision, contains a library and media center, creating welcoming areas for endless educational possibilities. The second, adjoining room can be used for presentations, as well as separate group discussions.



The book cube with Tidy-boxes is open on all sides and can be used as a mobile island for teaching materials.



INTEGRATION OF TRAFFIC AREAS

**LEARNING,
EVEN IN THE HALLWAYS.**

This group room is truly special. By making full use of the hallways, this space expands the learning areas out of the classroom. The challenge is not just to integrate the hallway with an attractive and functional manner, but also to meet the specific fire code regulations for these areas. For example, evacuation routes need to stay open to meet fire safety regulations. With this design, students from different classes are now able to utilize this space in a variety of ways. Students enjoy this area as a central lounge for interactions, and as a protected retreat area for relaxation. It is also a great spot for internet research, group work, or as a gathering point for the morning meeting.



Zoning for conference



Zoning for morning circle



Hallway area with zoning for group- and partner work

Stackable tables and chairs make room for big ideas. The casters on the table feet allow for easy and fast reorganization of this areas, to accommodate any occasion.



CAFETERIA

The cafeteria or dining hall has an important social function beyond merely providing a venue for eating together. In all-day school, especially, it is a place to meet, relax, and recharge. In order to create a sense of comfort in rooms as big as this, acoustics play an important role in the design. Frequently, the cafeteria area is also combined with the lobby and event area and used for extracurricular activities. The cafeteria is correspondingly zoned in different organizational models and supply systems. Depending on how the food or cooking are integrated into the pedagogic concept of the school, open cooking stations for students can also be integrated.



CAFETERIA
A MEETING POINT FOR EVERY TIME OF THE DAY.

This cafeteria of a school with all-day care is directly connected to a canteen. Two snack counters - with and without staff - ensure short distances and help prevent lines, even during peak times. The inviting atmosphere of the cafeteria is created by the harmonic color palette and the natural materials, such as domestic wood from sustainable forestry. The integrated lounge elements are equipped with hygienic, washable materials that are extremely durable. The generous zoning of the room allows for flexible changes and offers plenty of retreat possibilities. The cafeteria is a popular meeting point not just during the day but also during evening events.



The texture of Pagholz® chair seats is both appealing and extremely durable. The school logo is located on the back side of the backrests.

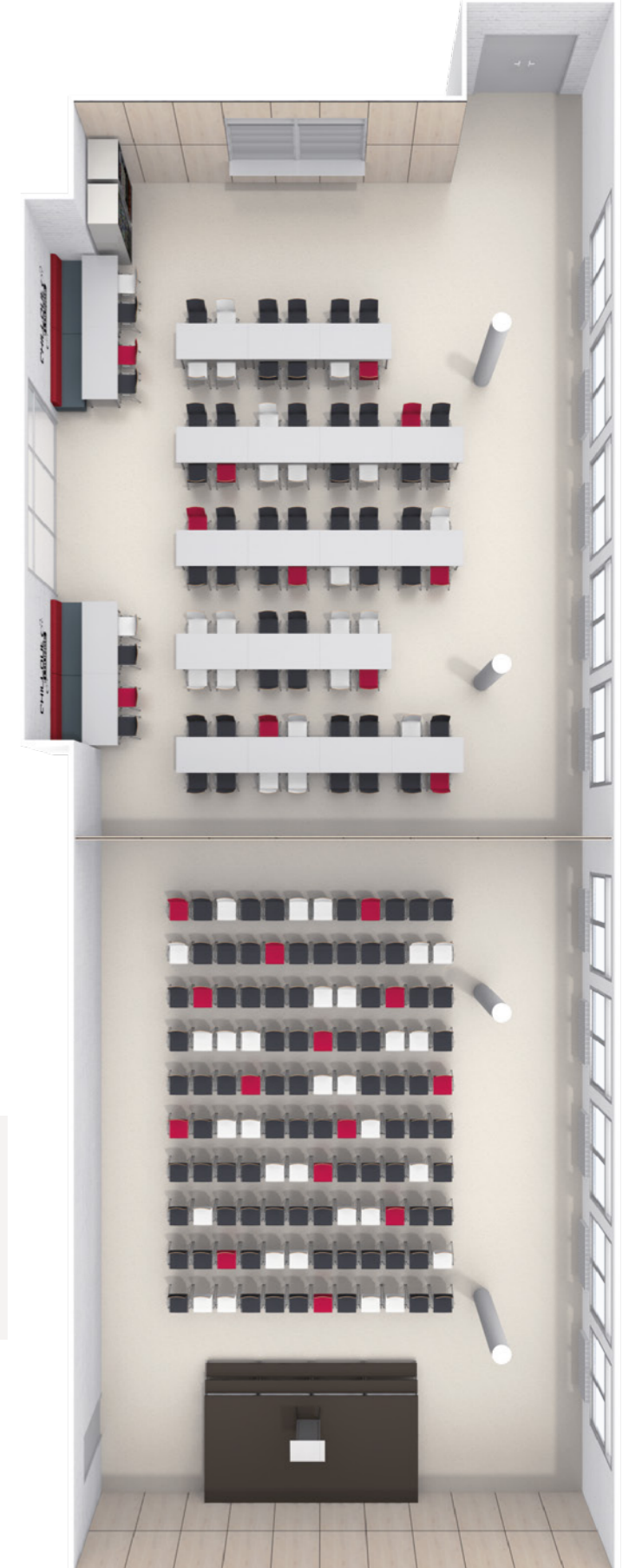




CAFETERIA & ASSEMBLY HALL DAILY NUTRITION AND EVENING PROGRAM ALL IN ONE.

This large cafeteria can be divided in two, using a built-in retractable wall that creates space for an assembly hall, with a variable-height podium, and stackable auditorium seating. In its secondary use, this cafeteria operates independently and uninterrupted in the separate area. The self-service area next to the service window provides the possibility of enjoying snacks and beverages, even when the cafeteria is closed.

The mobile podium and step elements work seamlessly together to provide a sturdy and safe stage.



TEACHER'S WORK AREAS

The everyday life of pedagogues has changed greatly with the introduction of new learning concepts and all-day care. Many teachers used to do much of their work at home in peace and quiet; now it is done on site in the work place. The teacher's lounge thus has to adapt and create zones for many different needs: whether fixed or flexible work places, meeting islands or separate meeting rooms - from uninterrupted work to conferences, everything must be possible. A tea kitchen or comfortable lounge elements form retreat areas in which to unwind and interact with colleagues in a relaxed setting. Important points for the planning are, for example, centralized or decentralized learning locations, teacher's distance from students, and personalized or non-personalized work places.



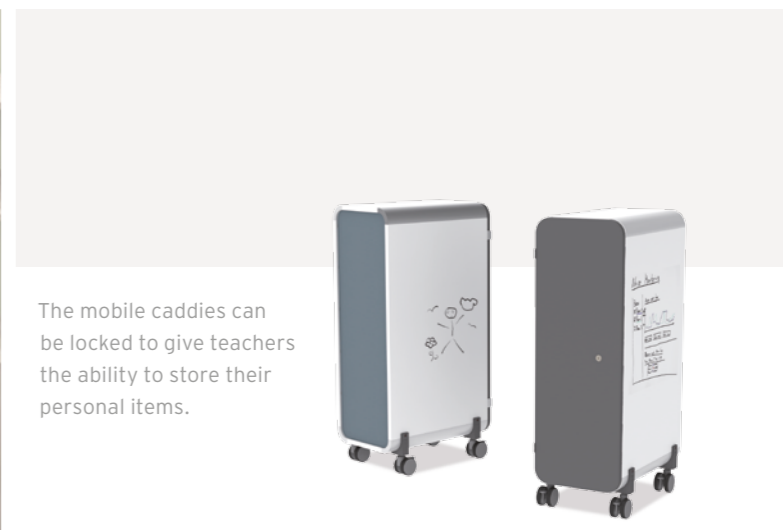


TEACHER'S LOUNGE REDEFINING THE TEACHER'S LOUNGE.

The teacher's lounge meets all essential requirements for a modern teacher's lounge in a cleverly zoned room. In the entry area, directly by the teaching plans, the communicative kitchen corner provides a possibility for everyday interaction. Lounge sofas, which offer a spacious and quiet retreat area, invite the teachers to relax and hang out.

In the center of the room is an open hexagon which houses the teacher lockers and wardrobe on its outside. On the inside, there is a sound-proof retreat zone for undisturbed work or brief meetings.

The individual work places are located in the honeycomb-shaped, modular COMBI system. Its sound-absorbing separating walls offer the possibility to use the room very individually and give each teacher optimal privacy. The personal teacher caddies support a flexible pool formation for these work places.



The mobile caddies can be locked to give teachers the ability to store their personal items.

TEACHER'S LOUNGE WITH MEETING ROOM

PROFESSIONAL AND PERSONAL - LINKED AND SEPARATE.

This concept gives pedagogues everything they need, both for communicative interaction and for work. Sound-absorbing walls not only divide the room into several small groups but also absorb the noises in the room. The generous lounge and kitchen area close to the entrance welcomes newcomers and splits the room into communication and work areas.

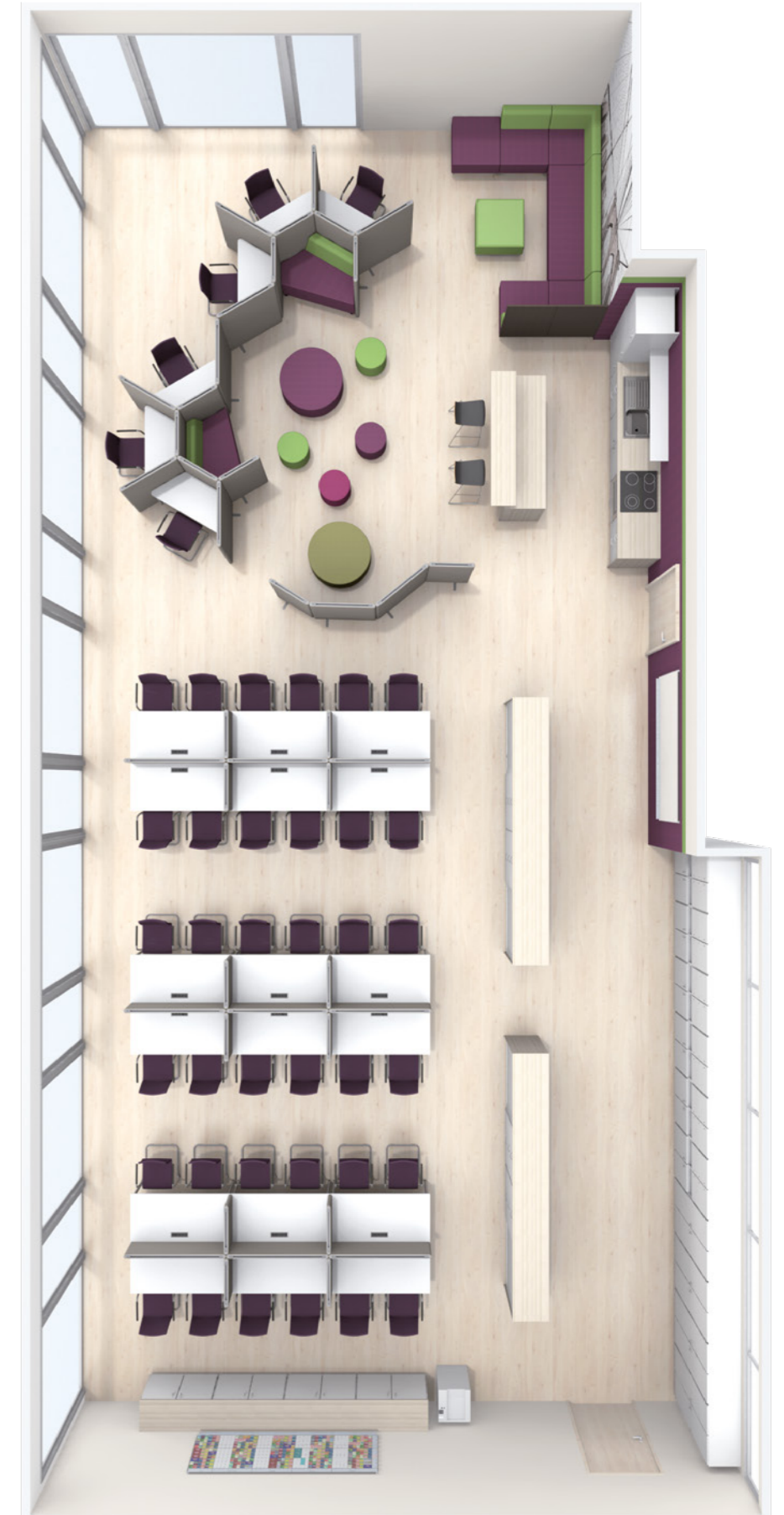
An additional, separate meeting room provides the fitting framework for small meetings, presentations, and conferences in a protected space.



LARGE TEACHER'S LOUNGE TRUE GREATNESS LIES IN THE LAYOUT.

Clear structure and zoning is necessary due to the enormous size of this room. It houses the work places for 42 pedagogues. Acoustic barriers and half-height cabinets separate work spaces from traffic zones and communication areas.

A comfortable communal area for interaction, protected individual work places for concentrated work, and flexible retreat areas in which to study individual topics in depth ensure that everyone can find the right place for his/her current needs.



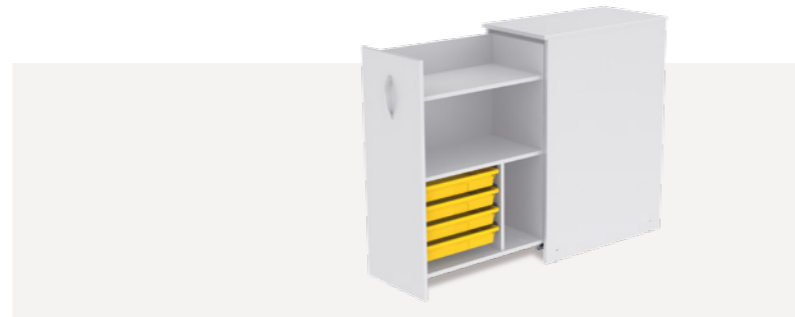
The shape of the comfortable upholstered furniture compliments the honeycomb structure of the separating walls. Combined, they create inviting protected areas for retreat.





TEAM ROOM
**ALL TOGETHER AND
TO EACH THEIR OWN.**

The generous, open design of this team room, designed for 10 pedagogues and 4 special pedagogues, offer many possibilities for focused work, by isolating the teachers from their colleagues. The individual work areas are protected by half-height acoustic separating walls. The walls of the meeting room are made of glass, and the lounge area is separated by a semi-transparent divider. All work places are equipped with electrical outlets. For this reason, separate IT work stations were not needed. Pharmacy cabinets, with vertical drawers, offer plenty of storage.



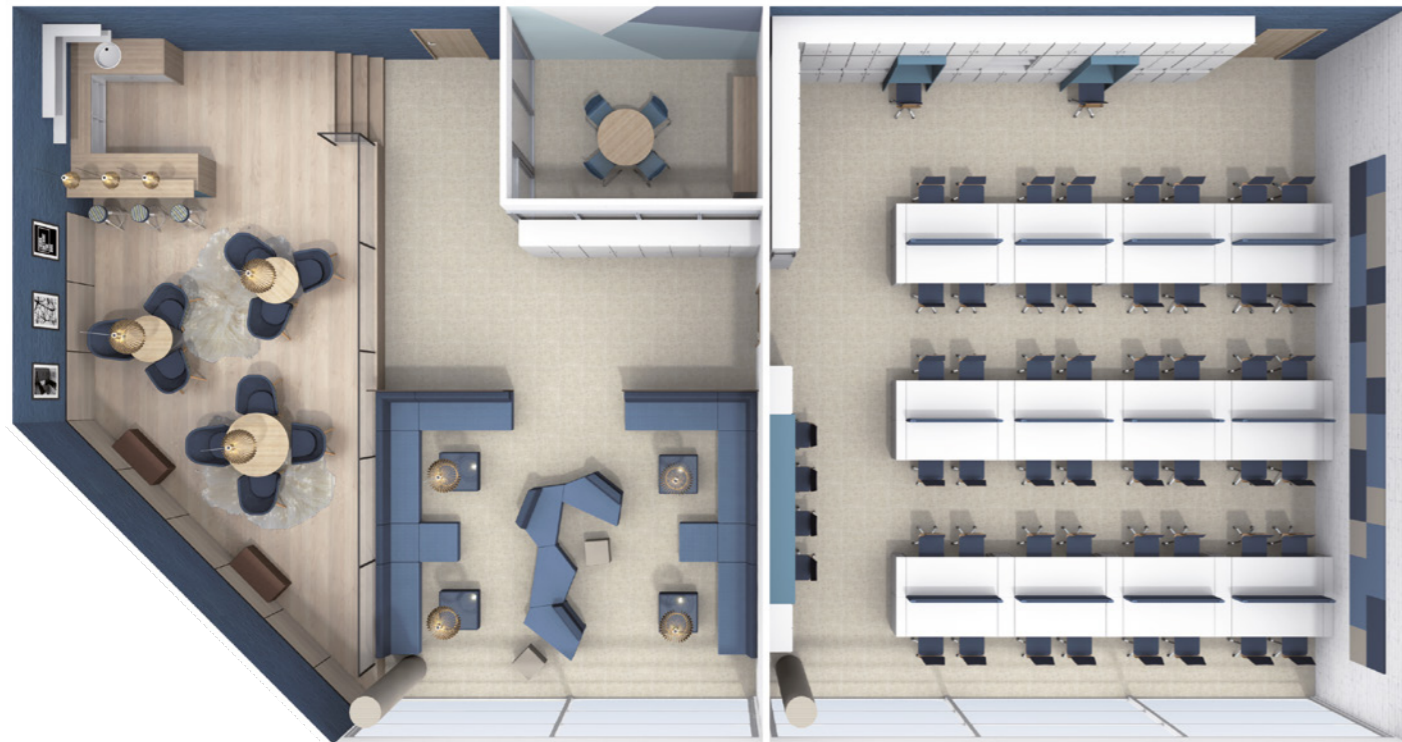
The vertical pharmacy cabinets at the work places enhance organization, and save one from having to dig through drawers.



TRIPLE TEACHER'S LOUNGE
**NOT JUST A
TEACHER'S LOUNGE -
A TEACHER'S SUITE.**

Although all faculty requirements can cleverly fit into a single room, this isn't our only design option. This interior design concept includes three rooms connected to each other for the different teacher areas.

The snack area, which looks like a café, invites you to withdraw completely from the work area during breaks. The generous lounge area also permits moments of relaxation without having to think of the schedule. A separate, protected room permits undisturbed, smaller meetings, such as parent-teacher conferences. The work area is zoned and equipped to permit focused work everywhere despite the high density of the work places.



PRODUCTS AND MATERIALS

Every day poses new challenges for the functionality and durability of furniture in the educational field. For more than 80 years we have been working on ideas for high-quality educational furniture which will brighten lives for a long time. We have developed new materials, innovative production methods, and intelligently detailed solutions which have made learning/teaching more comfortable and safer. We are quite proud of our accomplishments. An overview of the products selected for this publication will now be listed on the following pages.



SITTING



FLEX-Z

- Ergonomic plastic seat from robust polypropylene in 7 attractive colors
- The shape additionally supports reverse sitting, saddle sitting, and relaxed sitting
- Channel for ventilation and spine relief
- Three-dimensional sitting with Z-frame
- Floorsafe® floor-protectors save the floor by keeping the metal glider off surfaces.



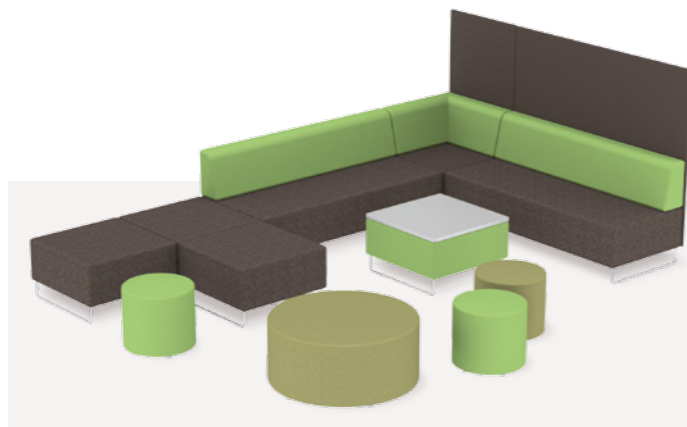
LINKABLE STACKING CHAIRS

- Solid beech multiplex shell, environmentally friendly paint
- Optional seat with durable, colorful CPL coating
- With optional seat and backrest cushion
- Also stackable with cushions due to stacking grooves
- Linkage for chair rows



FOOTREST STOOL

- Stool developed specifically for instruction at eye level
- Footrest from solid plastic
- Tool-free one-handed operation of footrest
- Tilt protection in the front area of the chair
- Can be combined with Flex-plastic shell or Pagholz® shell



CUSHIONED FURNITURE

- Modern design
- Free combination of individual modules possible
- High backrests function as space dividers and offer sound-protection
- Large selection of tough, low-maintenance covers
- Optional textiles in B1 quality

WRITING



S-SHAPE TABLES

- Modern and unusual tabletop
- Solid welded frame
- Frame sizes for all age groups
- Floor protection with level compensation
- Optional casters



STACKABLE TABLES

- Tables easy to stack from front due to special frame construction
- Can be placed together seamlessly
- Optional ASSODUR®, Woodmark, or Woodplac tabletops, specifically designed for everyday school life
- Frame sizes for all age groups
- Floor protection with level compensation, optional with 2 casters



TRIANGULAR TABLES

- Ideal table for group work with 2 - 8 people
- Solid welded frame
- Frame sizes for all age groups
- Floor protection with level compensation, optional casters
- Optional ASSODUR® desktop, specifically designed for everyday school life



FOLDING TABLE

- Easy to fold and easy to stack due to hard rubber buffer
- Available with appropriate stacking cart
- Tabletop with multi-layer melamine resin coating, thus scratch- and impact-resistant as well as glare-free
- Optional with ASSODUR® edge
- Optional with recessed solid wood apron (covers folding mechanism)

WORKING



BRIDGE TABLES

- Combination of table and bench with side panels
- Available in different heights and widths
- For tables in standing height with pipe as foot rest
- Especially robust construction
- Benches also with optional cushioning

MEDIA CENTERS

- Can be placed freely in the room
- Integrated electrical and network outlets
- Hidden cable ducts
- Modern construction with side panels
- Two work places in standing height

ZONING AND STORAGE

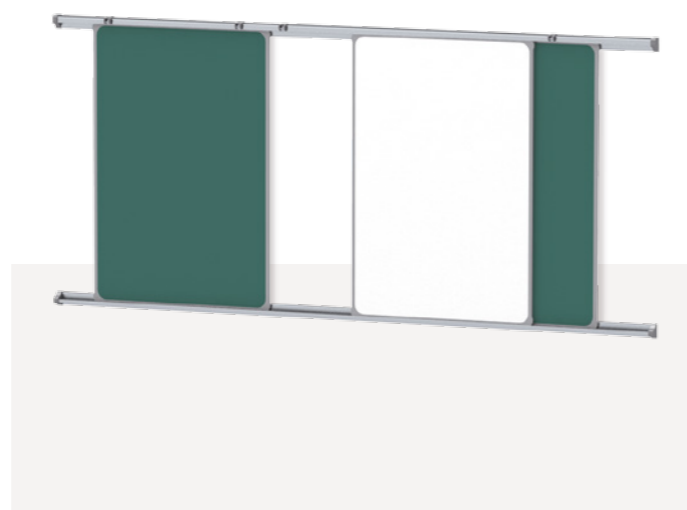


COMBi

- Acoustic partition wall system for zoning work areas and separating individual work places
- Special construction of walls reduces noise impact in room due to sound dampening
- Foldable feet
- Linking system to connect walls to each other
- Integration of electrical outlets possible

CADDY

- Multi-functional use as storage space room at table, space divider, or small counter
- Different versions: caddy open on one side or open on both sides and lockable caddy
- Optional whiteboard surfaces on sides
- Sound-absorbing back wall contributes to the minimization of noise
- Linking system to connect several caddies, for example into one material cabinet



MEDIA WORK STATIONS

- Modular design
- Electrical and network outlets possible
- Back wall can be used as a bulletin board
- Large storage compartment in top area
- Table heights adjustable for ISO sizes 4-7

SLIDING CHALKBOARDS

- Light chalkboard elements, removable from rails
- Ideal for group work on site and later presentation of results
- Chalkboard can be placed flat on tables
- Edge protection with elastic ASSODUR® edge
- For mounting on wall or integrated in cabinet walls



PHARMACY CABINETS

- Vertical container with lots of storage space
- Visual protection for more privacy
- Also suitable for use as counter for brief standing meetings in work place
- Full extension on easy-run rollers
- Variants with Tidy-boxes

HALLWAY CABINETS

- Modular design
- Integration of seating niches without blocking escape routes
- Perfect use of space by use of top-mounted cabinets
- Large selection of interior equipment
- Optionally made from B1 board material

A GOOD EXAMPLE. FOR EDUCATION.

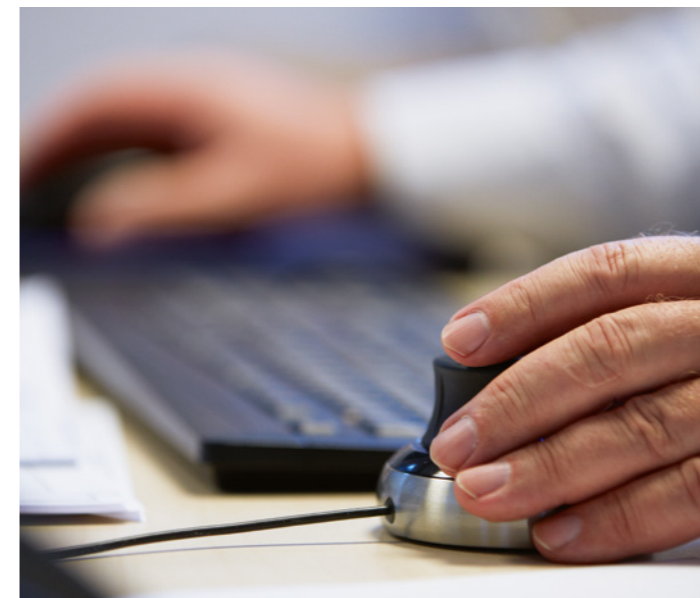
Careful use of resources expresses our belief that quality and sustainability belong together. As furnishers for educational institutions we have a special responsibility: our products influence coming generations.

This is exactly why we are committed to treating nature and the environment with respect by operating far below the legally permitted emissions limits:

- not using tropical wood
- not using substances containing solvents
- producing minimal dust and noise pollution
- reducing packaging
- disposing of our waste efficiently

We are happy when this commitment is recognized: our products receive numerous quality seals and certificates. This motivates us every day to implement safety and quality and to work on the many new developments which we make transparent - through regular controls by independent certifiers and in our own laboratory.

Because quality is the standard for us. Today and tomorrow.



OUR MOST IMPORTANT SKILL: LISTENING.

When we at A2S develop a new product, we first work with our ears. Our experience tells us: Our customers know exactly what requirements the ideal chair or table must meet. For this reason we take the time to listen to them in peace and quiet.

The result is furniture like Flex, which makes flexible learning possible and can stand up to the rigors of everyday school life. Flex is full of intelligent ideas: its waisted backrest permits straddling the chair in reverse to keep its "owners" healthy and in motion. And its floor protection not only saves floors but also nerves.

And Flex is only one of many examples in which you can see: we love to learn from our customers when planning and using our products.

Our field service will advise you during the planning and conception of your rooms and will integrate all your wishes and requirements. To give you a more vivid idea of how life and work will change with our ideas, we provide you with photorealistic renderings for your projects. In this way we create rooms just the way you imagine them - with A2S as your trusted partner.





resistant to chemicals



stain- and abrasion-resistant



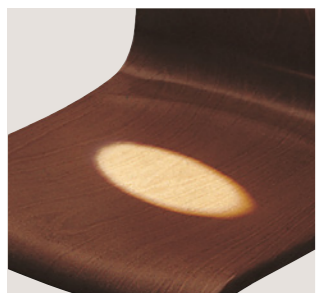
non-flammable, self-extinguishing



resistant to scratches and wear



shockproof and unbreakable



Lightfast

PAGHOLZ®

Wherever furniture needs to withstand heavy use, we rely on PAGHOLZ®, our own invention.

Thin layers of veneer are elaborately prepared for PAGHOLZ®, then dyed and soaked in resin. Only then do we press them into the desired shape under application of heat with up to 2,000 metric tons of pressure.

PAGHOLZ® provides the natural appearance of solid wood and much more:

- keeps its shape beautifully
- high level of scratch- and wear-resistance
- resistant to breaking and impacts
- stain- and abrasion-resistant
- lightfast and chemically stable

What this means for you: an easy to clean and non-flammable, self-extinguishing material that can even be weather-proofed with special resins.

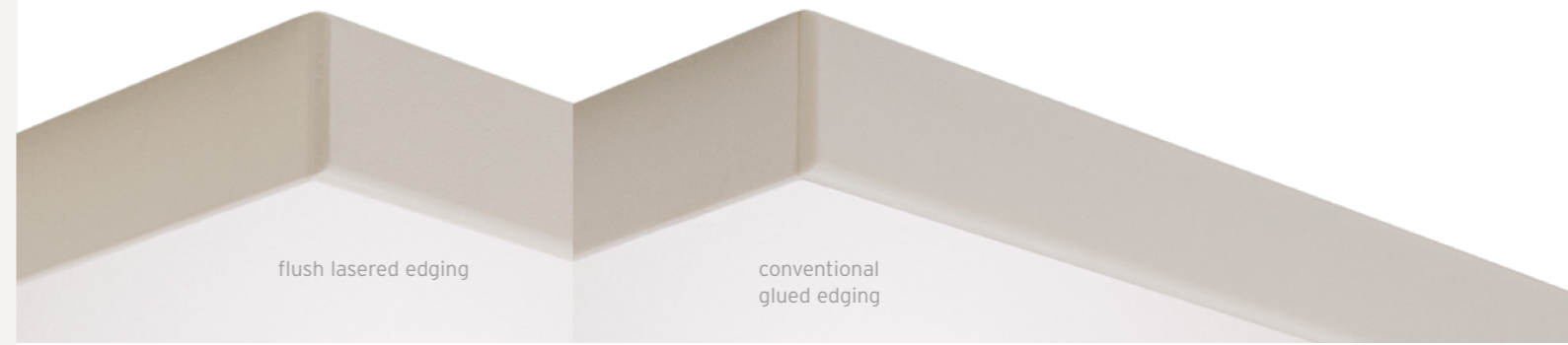
You can be sure of this: we only use native beech trees from stocks that are carefully replanted. And, of course, all PAGHOLZ® products are especially durable and recyclable.



FLUSH LASERED EDGING

We developed a new finishing method for square edges and the more rounded edges of polypropylene on furniture: the flush lasered edge. In this, edges are welded directly onto the tabletop using laser technology, leaving them flush and extremely wear-resistant.

The benefit for you: no more visible glued joints that could come unglued on the edges. Thanks to the flush edging, these pieces of furniture are also especially durable and resistant to moisture.

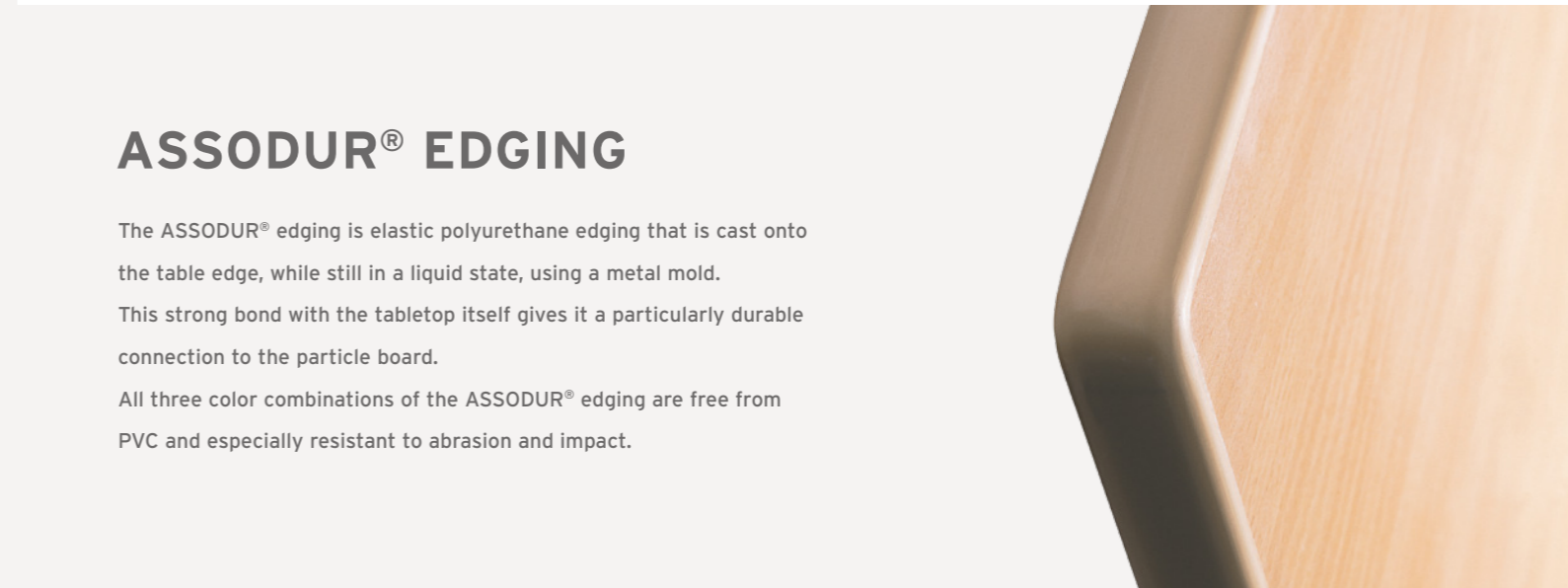


ASSODUR® EDGING

The ASSODUR® edging is elastic polyurethane edging that is cast onto the table edge, while still in a liquid state, using a metal mold.

This strong bond with the tabletop itself gives it a particularly durable connection to the particle board.

All three color combinations of the ASSODUR® edging are free from PVC and especially resistant to abrasion and impact.



SOLID WOOD EDGING

A2S solid wood edging is firmly glued to the particle board, looks high-quality and protects the edges, which are exposed to wear and tear. For those who are after the highest standards, we offer our profiled edges - in this case, the particle board is additionally

coated on both sides with an approx. 0.03" thick HPL strip. This wear-, scratch- and impact-resistant HPL coating is flame-retardant and food-proof, and also environmentally-friendly thanks to the sustainable origin of the raw materials.



A2S TABLETOP

Since students sometimes abuse their desks, the table they sit at needs to be especially resistant to wear, scratches and impact.

It is for this precise reason that we cover all our tabletops made from particle board and the standard A2S finish with several layers of a robust melamine resin. In this way, school furniture not only withstands the rough and tumble of everyday school life, it is also easy to clean and extremely anti-glare.



WOODMARK®

Special resins ensure break-resistant quality for our MDF laminates. We compress the upper and lower layer of the wear-resistant, melamine resin-coated finish layer with the board, applying high levels of pressure and heat in a metal mold. This makes the Woodmark® surfaces highly resistant to abrasion, scratches and impact. Thanks to the A2S texture, they are unique, anti-glare and easy to clean. Rounded edges reduce the risk of injury.

WOODPLAC®

Our Woodplac® tabletops made from solid beech Multiplex are veneered with finishing layers or with optional genuine wood veneers for an elegant look. The surface is always covered with multiple layers of melamine resin, making them especially resistant to wear, scratches and impact. The anti-static, splinter-free and anti-glare tabletops with gently rounded edges are less susceptible to potential damage and reduce the risk of injury.

FLOORSAFE®

reduces damage to the floor and the risk of slipping when tilted. This significantly lowers the noise level and is not only easier on the nerves, but also on the classroom floor.

The screws are secured from the top to prevent scratches to the floor. And when something really does need replacing, it's quick and easy to do so.



CONTACT

HOW YOU CAN REACH US

USA

A2S Inc.
400 Oser Ave
Suite 1650
Hauppauge, NY 11788
Tel. Office 631.501.1057

GERMANY

A2S Furnishing Systems
ASS Einrichtungssysteme GmbH
Po. Box 1154
96338 Stockheim
Germany
Tel. +49 9265 808-0
Fax +49 9265 808-201

Email info@a2s.com



DER BILDUNGSEINRICHTER.

Subject to technical changes. No liability accepted for printing errors. ASS-ST.VERT.17.02.US.01. Edition 1 06/2018

WWW.A2S.COM