



ADLERSHOF BERLIN STUDENT VILLAGE

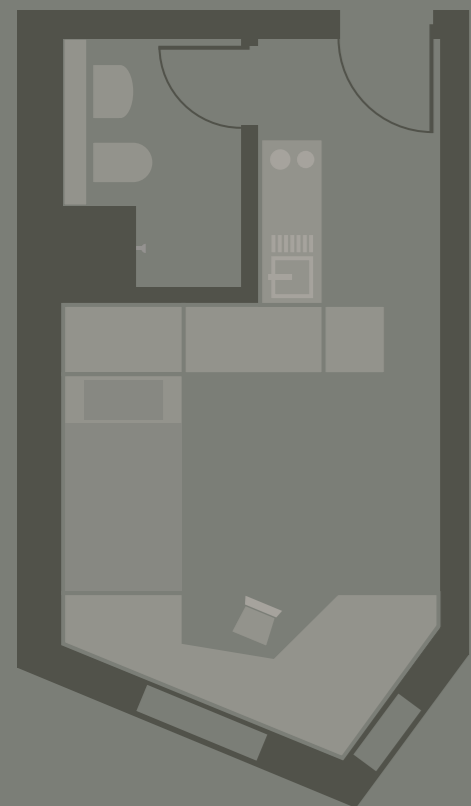
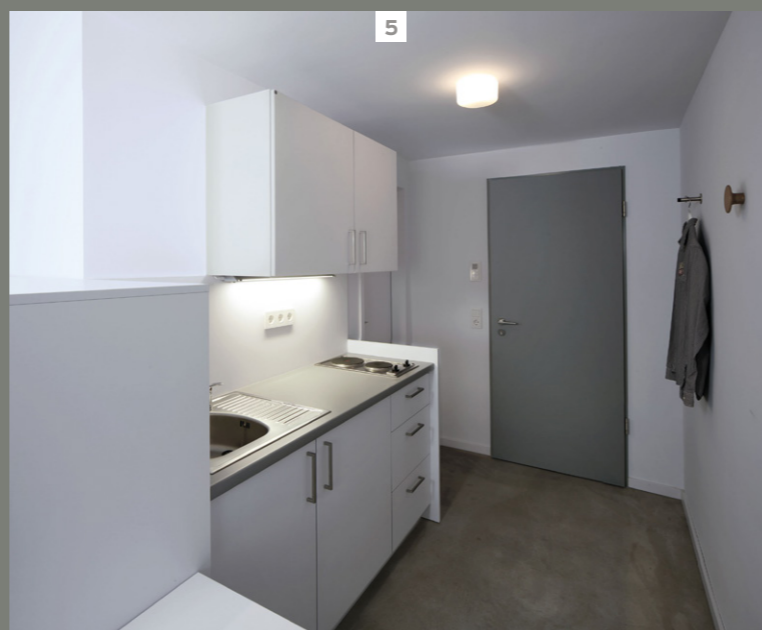
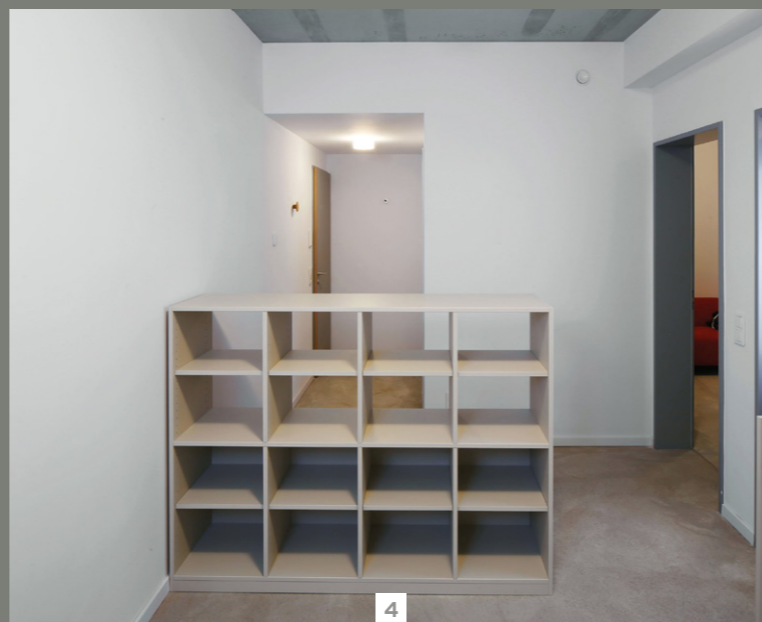


1/2 Individual study bays: work areas with storage space, natural light and a view. The built-in furniture is part of the building design and ensures every last corner can be used.

3 Multifunctional furniture is constructed to provide flexibility even in the tightest of spaces.

4/5 Pantry kitchen and dining area are visually separated with room dividers that provide additional storage space.

6/7/8 The communal kitchens feature wall cupboards and compact kitchen units as well as tables arranged in long rows.



BUILDING

Adlershof Berlin student village, 2014

Project

Village-style student accommodation with infrastructure providing study, accommodation and living space on an 11,000 m² campus.

Concept

As is usual in a village, the ten 3- and 4-storey buildings (with a total of 386 accommodation units) are arranged around a central square housing all the important facilities. The regular appearance of the facades is broken up with geometrically irregular „study bays“ featuring wooden cladding and colourful sunshades.

Architects

Die Zusammenarbeiter Gesellschaft von Architekten mbH, Berlin
Claudia Sieper, Christian Schöningh with Sonia Sandberger, Tobias Vogel and Stephanie Nick as well as Lutz Hüning (Interior/furniture)

FEATURES

Interior Design

Concept

In order to create as much room as possible in a small space, the architecture and the fittings have been moulded into one - A2S have integrated the desks and built-in cupboards into every single one of the 386 individual bays with millimetric accuracy. Such complex made-to-measure work requires speedy and exact planning, starting with the manufacture of the boards. The rooms are discreetly divided into white and grey areas to separate the living space from the study areas.

Options

The apartments have plenty of storage space even though they are not cluttered with furniture. The discreet furnishings leave plenty of options for individuals to arrange rooms as they wish. The large communal sitting rooms and kitchen areas feature storage systems with roomy individual lockers, ensuring everything is in its place and yet easily to hand.

Sustainability

Quality that's made in Germany. Responsible management of resources is essential for products that will shape generations to come. A2S have already netted a host of awards and certificates for their short manufacturing chains, refusal to use solvents and tropical woods and standards that lie well within legal maximums.



DER BILDUNGSEINRICHTER.