



WHAT ROOMS ARE MADE OF.

OUR OVERVIEW OF MATERIALS



FABRICS for all, full upholstery, upholstered furniture

PRICE GROUP 1

INTENSIVE



Yellow BD 005 Orange BD 012 Terra BD 013 Red BD 011 Light Green BD 021 Green BD 048



Dusty Blue BD 003 Jeans Blue BD 071 Dark Blue BD 006 Aubergine BD 004 Light Brown BD 008 Dark Brown BD 036



Light Gray BD 078 Anthracite BD 023 Black BD 033

SKANDIA



Gray-Beige Blend SN 084 Old Rose Blend SN 061 Aubergine Blend SN 069 Light Green Blend SN 031 Khaki Blend SN 034 Gray-Blue Blend SN 072 Dark Blue Blend SN 080



Sand Blend SN 017 Taupe Blend SN 011 Gray Blend SN 021 Anthracite Blend SN 005 Black SN 014

FLEECE



Terra FN 019 Wine Red FN 020 Light Green FN 018 Dark Green FN 017 Mint FN 016 Blue-Gray FN 015 Petrol FN 014



Dark Blue FN 013 Nature Blend FN 002 Gray-Green Blend FN 001 Light Gray Blend FN 005 Dark Gray Blend FN 004

PRICE GROUP 2

TAFF B1



Yellow PA 390 Mustard Yellow PA 352 Yellow-Orange Blend PA 930 Light Red PA 527 Red PA 010 Dark Red Blend PA 511 Aubergine PA 020



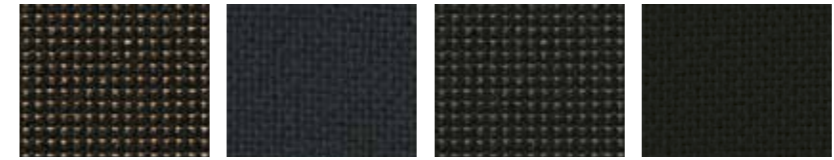
Lime PA 060 Lime Blend PA 560 Green PA 065 Green Blend PA 565 Dark Green PA 736



Petrol PA 653 Light Blue PA 050 Blue-Gray Blend PA 550 Blue PA 040 Dark Blue Blend PA 541 Ivory PA 030 Beige PA 153



Gray-Brown Blend PA 532 Light Gray PA 854 Gray PA 814 Gray Blend PA 555 Gray-Orange Blend PA 531



Black-Brown Blend PA 533 Anthracite PA 810 Anthracite Blend PA 571 Black Uni PA 833

PRICE GROUP 3

PROTEX



Pure White SV 280 Yellow SV 065 Orange SV 662 Terra SV 661 Red SV 211 Purple SV 214 Aubergine SV 064



Light Green SV 508 Medium Green SV 010 Dark Green SV 563 Turquoise SV 031 Ice Blue SV 213 Medium Blue SV 067 Dark Blue SV 307



Beige SV 001 Light Brown SV 009 Dark Brown SV 424 Light Gray SV 401 Dark Gray SV 402 Anthracite SV 902 Black SV 901

The materials presented in this brochure have been reproduced as faithfully as possible. Color deviations are possible and therefore the original samples should be used as a basis for decision when ordering. Just contact us with your inquiry for real material samples.

PRICE GROUP 3

WOOL



Mustard Yellow CUZ 2W Orange CUZ 39 Orange Blend CUZ 90 Red CUZ 18 Red Blend CUZ 63 Violet CUZ 21 Violet Blend CUZ 2T



Green CUZ 1L Green Blend CUZ 1K Dark Green CUZ 1N Turquoise CUZ 02 Light Blue Blend CUZ 1R Medium Blue CUZ 1V Blue Blend CUZ 1W



Dark Blue Blend CUZ 62 Dark Blue CUZ 09 Nature CUZ 47 Nature Blend CUZ 31 Light Gray Blend CUZ 28 Gray Blend CUZ 1E Anthracite CUZ 12

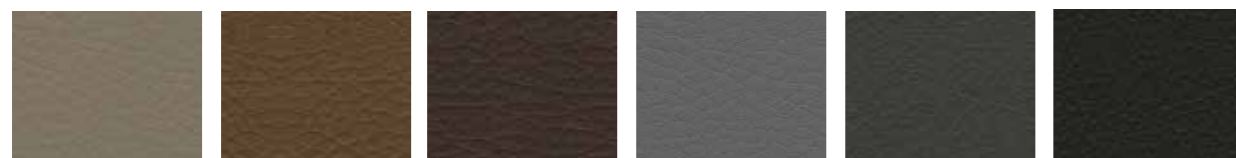


Anthracite Blend CUZ 30 Black Blend CUZ 67 Black CUZ 08

ARTIFICIAL LEATHER



Orange K 143 Red K 035 Yellow-Green K 429 Blue K 009 Light Natural K 710 Dark Natural K 740



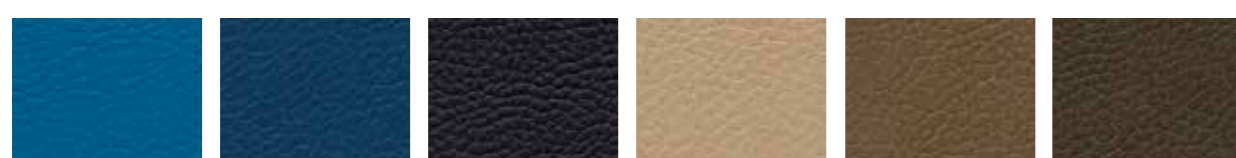
Light Brown K 006 Medium Brown K 210 Dark Brown K 250 Medium Gray K 045 Anthracite K 755 Black K 780

PRICE GROUP 4

ARTIFICIAL LEATHER B1



Orange F 6461666 Light Red F 6461707 Dark Red F 6461665 Light Green F 6461657 Dark Green F 6461705



Light Blue F 6461709 Medium Blue F 6461710 Dark Blue F 6461729 Beige F 6461653 Light Brown F 6461660 Dark Brown F 6461704



Gray-Brown F 6461658 Anthracite F 6461663 Black F 6461659

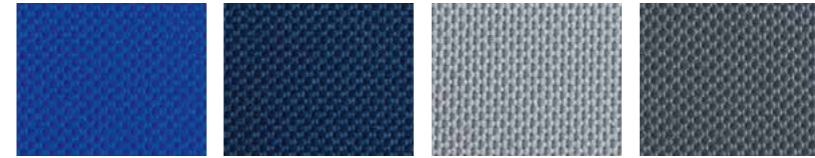
PRODUCT-RELATED FABRICS

BEANBAG RANGE CHILL

OX

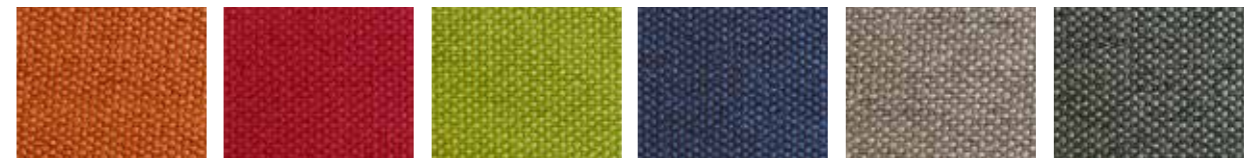


Yellow OXY Orange OXO Red OXR Bordeaux OXBU Kiwi OXK Lime OXLI Mint OXFR



Blue OXB Marine OXNA Gray White OXWG Gray OXG

NORDIC



Pumpkin Orange NPM Red NR Lime NLI Marine NNA Concrete Gray NCO Gray NG

OUTSIDE



Yellow OY Orange OO Red OR Lime OL Blue OB Dark Blue ODB Gray OG

UPHOLSTERY FABRIC | UPHOLSTERY LEATHER

FLEX | WAVE



Orange Red Green Blue Anthracite

WAVE LEATHER



Leather Black Leather White

LEAF-SHAPED ACOUSTIC ELEMENTS

FILZ



Orange 3004 Orange Blend 3006 Red Blend 4002 Green 6011 Light Green Blend 2021 Green Blend 6013



Blue 7025 Blue Blend 7040 Gray Blend 5318

FINISH

PRICE GROUP 1



Beech* D334 Maple* D033 Pure White U400 Gray White* U023 Polar Gray* U456 * Finishes available for 12 mm compact board

PRICE GROUP 2



Acacia D5028 Milano Oak D20095 Sonoma Oak D4110 Beige U27049 Brown U1193 Anthracite U1257



Yellow U1579 Orange U1667 Red U1669 Wine Red U311 BS Green U27190 Yellow-Green U110 Lime U19502



Blue U1748 Atlantic U18074 Blue-Gray U18006

ASSODUR®-EDGE COMBINATIONS



Beech D334 Ocher 2340 Maple D033 Ivory 1015 Gray-White U023 Gray 7037

WOODMARK FINISH



Beech D334 Maple D033 Gray White U023

PAGHOLZ® COLOUR WOOD



PAGHOLZ® Nature 010 Honey 910* Ruby 510* Grass 1310* Moss 1410* Aquamarine 1110* Eucalyptus 1210*



Cornflower 810* Linen 1010* Stone 710* Coffee 210

* WOODMARK COLOUR WOOD

MULTIPLEX COLOUR WOOD VENEER LONGITUDINAL



Natural Beech Yellow 1579 Orange 1667 Red 1669 Green 27190 Blue 1748 Anthracite 1257

CPL LAMINATE MULTIPLEX TRANSVERSELY VENEERED CHAIRS



Platin White CPL W980 Light Gray CPL U708 Red CPL U306 Graphite Black CPL U961

STEEL COLOURS



Pure White 9010 Gray White 9002 Chrome-Silver 9006 Gray 7037 Gray Aluminium 9007 Anthracite Metallic Black-Gray 7021



Yellow 1003 Red 3020 Green 6018 Blue 5005 Sapphire Blue 5003 Chrome-Plated

PLASTIC COLORS FLEX



Yellow 1579 Orange 1667 Red 1669 Green 27190 Blue 1748 Gray 7040 Anthracite 1257

PLASTIC COLORS TIDY BOX



Yellow Red Green Blue Transparent

CORK



Natural Cork

CORK-LINOLEUM



Green 2213 Sandy 2187 Gray-Blue 2162 Anthracite 2204

YOUR CONTACTS IN SALES

A2S-Furnishing Systems
ASS-Einrichtungssysteme GmbH
A2S-Adam-Stegner-Straße 19
96342 Stockheim
Germany
Phone +49 9265 808-0
Fax +49 9265 808-201
E-mail info@a2s.com

FABRIC CHARACTERISTICS

INTENSIVE	100% polyester flame retardant according to EN 1021 1&2 weight 250 g/m ² +/-5% abrasion resistance in Martindale > 100,000 runs pilling 5 tested for harmful substances ÖKO-TEX 100
SKANDIA	100% polyester flame retardant according to EN 1021 1 weight 245 g/m ² +/-5% abrasion resistance in Martindale 70,000 runs pilling 4-5 tested for harmful substances ÖKO-TEX 100
FLEECE	100% polyester flame retardant BS 5852:Part1:1979 (cigarette) weight 402 g/m ² abrasion resistance in Martindale 100,000 runs pilling 4 tested for harmful substances ÖKO-TEX 100
TAFF B1	100% polyester flame retardant according to EN 1021 1&2, DIN 4102 B1 weight 260g/m ² +/-5% abrasion resistance in Martindale 70,000 runs pilling 5 tested for harmful substances ÖKO-TEX 100
PROTEX	Surface 100% vinyl, fabric 100% polyester flame retardant according to EN 1021 1&2, DIN 4102 B2 weight 685 g/m ² abrasion resistance in Martindale 300,000 runs no pilling tested for harmful substances wipeable with soap and water water-repellent antibacterial antistatic stain protection resistant to blood and urine mould-resistant carrier layer and surface disinfectant-proof
WOOL	100% wool flame retardant according to EN 1021 1&2 weight 460 g/m ² +/-5% abrasion resistance in Martindale 50,000 runs pilling 4 tested for harmful substances
ARTIFICIAL LEATHER	Surface 100% polyurethane/ fabric 65% polyester, 35% cotton flame retardant according to EN 1021 1-1 weight 435g/m ² +/-10% abrasion resistance in Martindale > 100,000 runs no pilling tested for harmful substances
ARTIFICIAL LEATHER B1	85% PVC compound, 15% BW knitted fabric flame retardant according to EN 1021 1&2, DIN 4102 B1 weight 780+/-50 g/m ² abrasion resistance in Martindale > 75,000 runs no pilling tested for harmful substances resistant to blood and urine disinfectant-proof
FLEX/WAVE	Flame retardant according to DIN 4102 B1 weight 250 g/m ² +/-5% abrasion resistance in Martindale 40,000 runs pilling 4 tested for harmful substances ÖKO-TEX 100
WAVE LEDER	Genuine leather flame retardant according to EN 1021 1&2
OX	100% polyester with PVC coating weight 374 g/m ² abrasion resistance in Martindale 60,000 runs no pilling coating washable at 40°C wipeable waterproof
NORDIC	100% polyester weight 330 g/m ² abrasion resistance in Martindale 100,000 runs pilling 4-5 tested for harmful substances ÖKO-TEX 100 washable at 60°C
OUTSIDE	Artificial leather 83% PVC, 15% PES, 2% PU flame retardant according to EN 1021 1&2 weight 600 g/m ² abrasion resistance in Martindale 120,000 runs no pilling tested for harmful substances wipeable waterproof
FILZ	Colour 5318 - 100% polyester other colours 100% polypropylene flame retardant according to EN 1021 1&2 weight 300 g/m ² +/- 10%